

Seed feed distribution

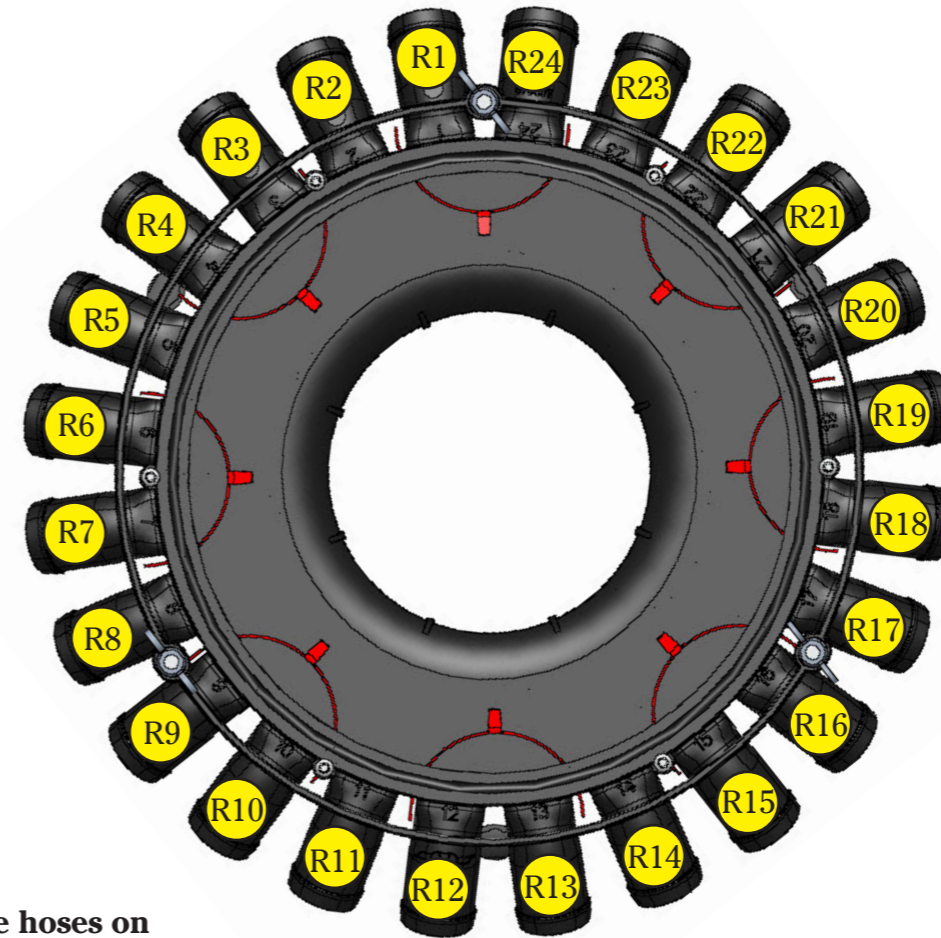
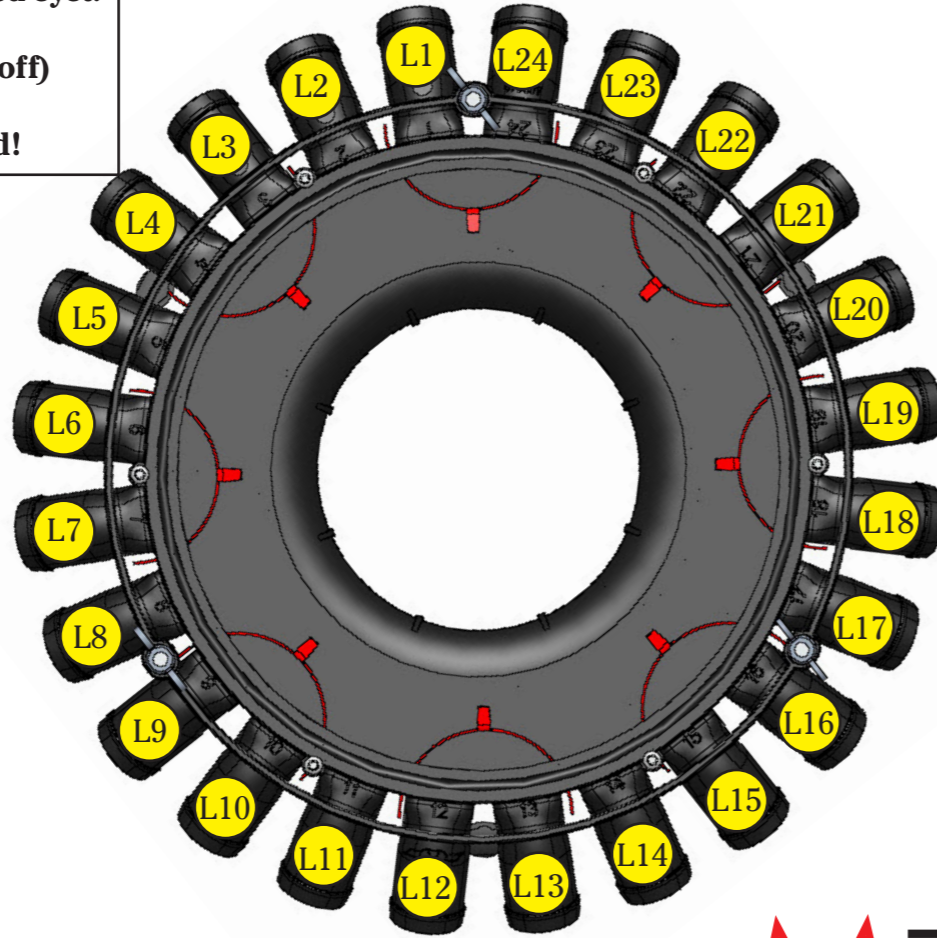
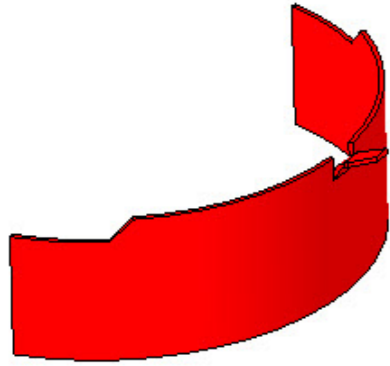
Spirit 600C

Plugs needed for the seed feed syst:

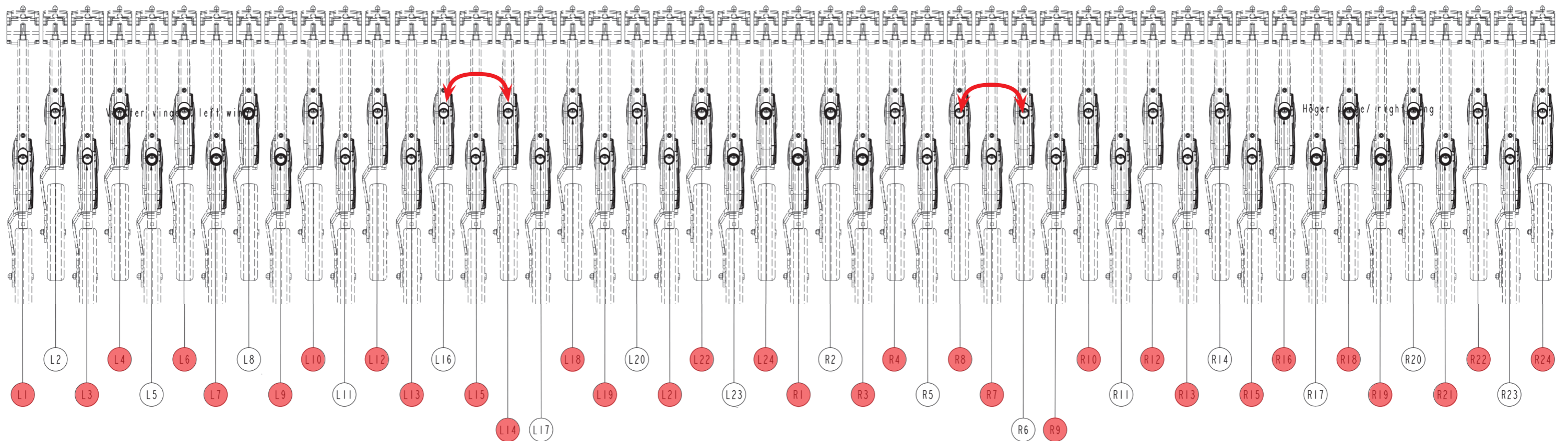
181712 16 (2 row shut off)

Note! Set tramline to disabled!

Plug set up
375 mm



 = Change the hoses on the coulters!



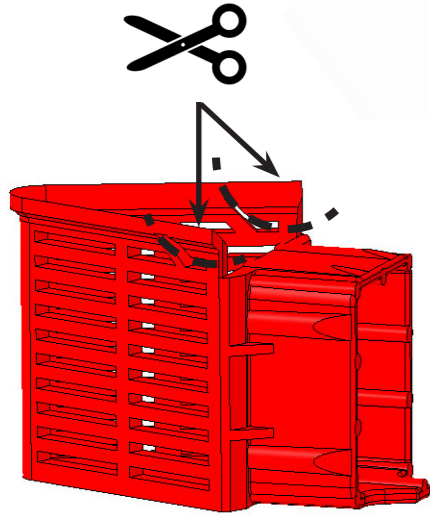
Seed feed distribution

Plugs needed for the seed feed syst:

185961 32 (1 row shut off)

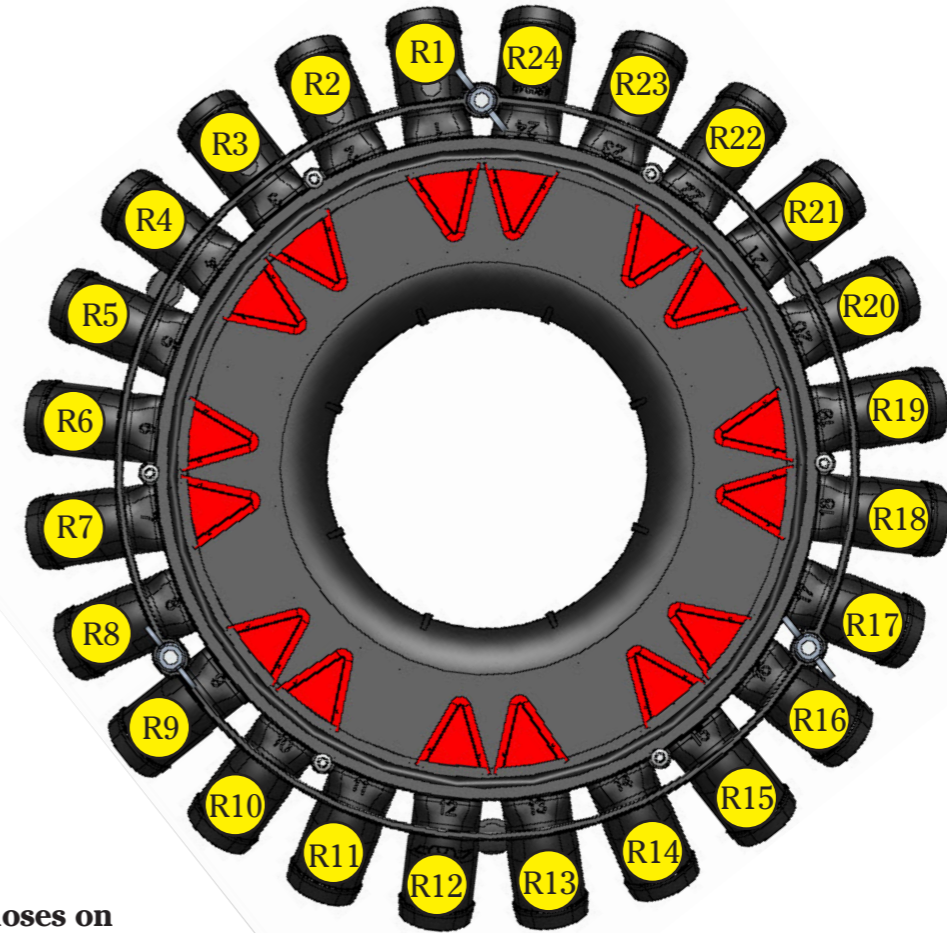
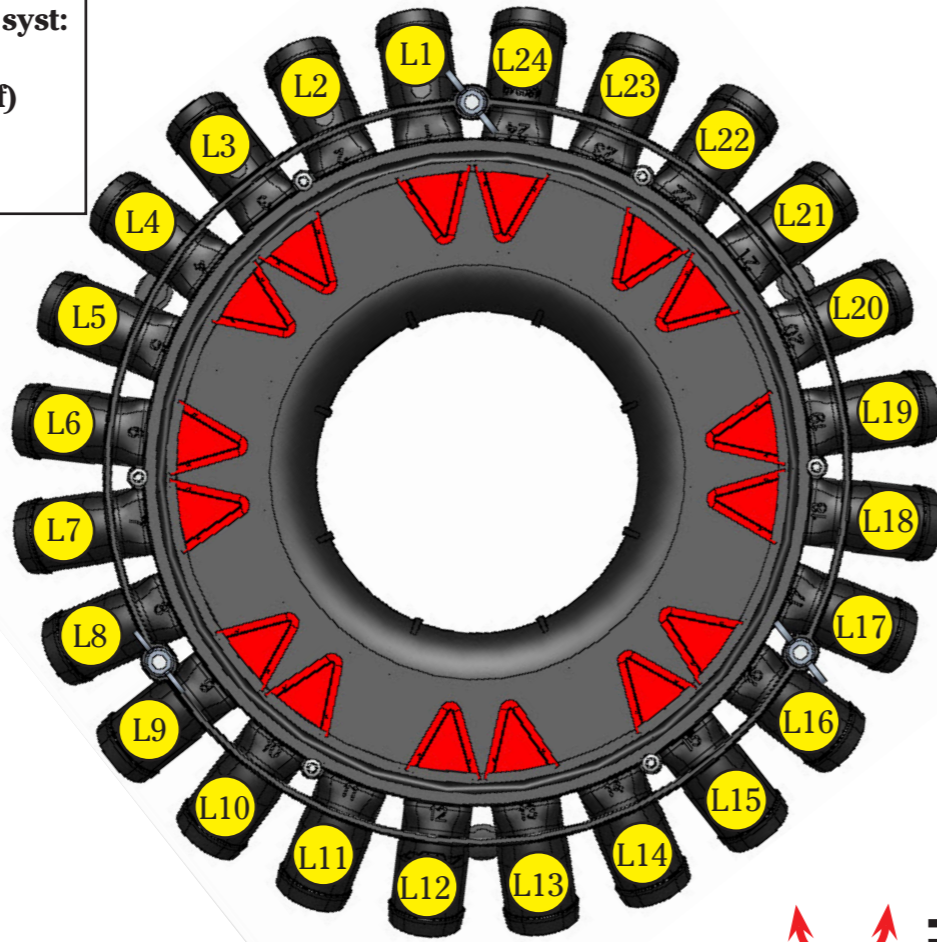
Note! Set tramline to disabled!

Cut the corners to fit the lid.



Spirit 600C

Plug set up
375 mm



 = Change the hoses on the coulters!

